

A N T

E L O

P E S

MERUSRI ANTELOPES

Life runs deep.  
Life runs long.

And we want to explore every facet that it holds  
and unveils along the way.



We live for the many layers  
of life and the unexpected  
experiences it throws our  
way every day.

In fact, we took inspiration from Arizona’s antelope  
landscape, delivering a multi-layered experience and crafted  
a space meant to deepen our complex connection with life  
and every day it gives us. Together, we see how it all unfolds.

Together, we discover new ways of perceiving the world.

This is a home that ushers you on your journey to capture  
the joy of living. Within you and the wider surroundings.

This is Merusri Antelopes.

LIVE IN WONDER

MERUSRI ANTELOPES



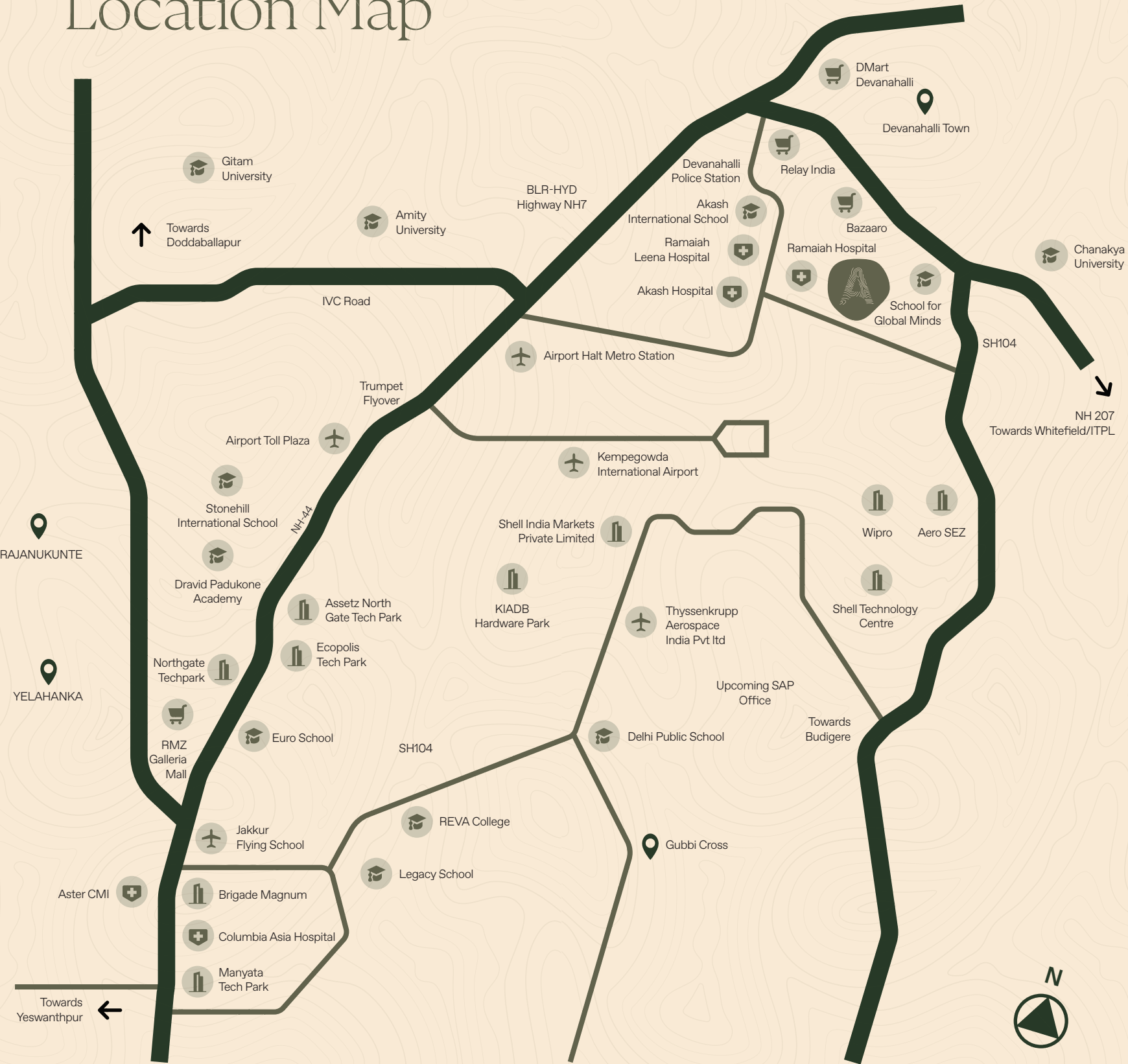
# ACRES OF AWE

Antelopes is a 9-acre villa project intelligently crafted to offer experiential living

Situated within Bengaluru’s 135-acre Brigade Orchards, it has everything that a community needs, from connectivity to superlative infrastructure.



# Location Map



# HIGHLIGHTS

## AERONAUTICAL

- Kempegowda International Airport
- Airport Halt Metro Station
- Airport Toll Plaza
- Jakkur Flying School
- Thyssenkrupp Aerospace India PVT LTD

## HEALTH CARE

- Ramaiah Leena Hospital
- Akash Hospital
- Aster CMI
- Columbia Asia
- Manipal Hospital
- Ramaiah Hospital

## WORK LOCATIONS

- WIPRO
- Aero SEZ
- RMZ Ecospace
- Shell Technology Centre
- KIADB Hardware Park
- Ecopolis Tech Park
- Shell India Markets PVT LTD
- Assetz North Gate Tech Park
- Brigade Magnum
- Manyata Tech Park

## SPORTS

- Dravid Padukone Academy

## SCHOOLS

- Akash International School
- School for Global Minds
- Delhi Public School
- Legacy School
- National Public School
- Stonehill International Public School

## UNIVERSITIES & COLLEGE

- Chanakya University
- Gitam University
- Amity University
- REVA College

## SHOPPING & RETAIL

- Bazaaro
- Dmart Devanahalli
- Relay
- RMZ Galleria Mall

# UPCOMING DEVELOPMENTS

- Embassy Manyata Extension
- Bagmane Sierra Business District
- North Gate Phase 2
- Purvankara Business Park
- Divyashree Tech Space
- Devanahalli Signature Business Park
- SAP Labs

- Prestige Tech Cloud Park
- Bharatiya City IT Park Extension
- Century Business Park and Township
- WTC 2
- Embassy Knowledge Park
- Boeing



MERUSRI ANTELOPES

# Unique villas that are meant to nurture every aspect of the life you will build.

Modern villas. Avant garde design. Premium materials.  
Connecting the indoors, outdoors, and every single resident.

## Material Palette



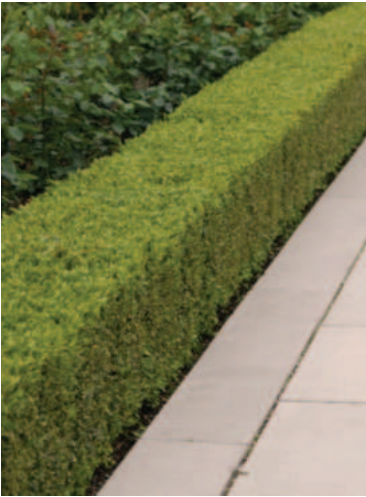
Terracotta Cladding



Stained Concrete



Ribbed Concrete



Green Hedge



- G+2 storeys
- Terrace with open air party lounge & pergola
- Living room spaces across all levels
- Distinctive materials including terracotta, ribbed concrete and extended landscaping
- Water positive homes and community
- An abundance of natural light throughout the interiors
- Home automation for enhanced comfort and convenience.
- German-make lift for seamless movement across all levels.



An abstract graphic in the top left corner featuring a large, solid white circle representing the sun. From the bottom edge of this circle, a multitude of thin, white lines radiate outwards and downwards, fanning out across the dark grey background to resemble sunbeams or a stylized landscape horizon.

# INTEGRATED GREENERY EVERYWHERE YOU LOOK

Modern cities require modern solutions, and we've created a unique one for integrating more greenery, and multifaceted greenery for every resident.

This takes the form of tiered hillocks, with vertically rising layers modelled after the multilayered landform of the Antelope Canyon.

And much like the canyon highlights the interconnectedness and interdependence of all living beings, so do our hillocks—adapted for different uses for all sorts of residents.

Each hillock is designed with a targeted approach. Catering to different age groups and activities. All for a multilayered and multisensory experience.

Antelopes is unlike any other home, with design, features, and amenities that stand out in form and function.





# Many hillocks, multiple uses

These hillocks are adapted for different uses, with multiple layers of seating and open space creating distinct zones that cater to different categories of people and experiences.

Children and seniors  
Views and play  
Relaxation and connectivity

All for a multidimensional and multisensory experience.

## Every hillock and raised park offers

- Ample seating space that facilitates conversation
- Greenery that fosters interconnectedness with nature
- Dynamic spaces in the form of steps, amphitheatres, and concealed seating
- Morning and evening seating spaces, with a central plaza for shaded seating and community bonding

Apart from being beautiful to behold and use, the elevated and tiered green hillocks are crafted to buffer acoustics and visuals. This offers privacy to people using the space, and protects the serenity of villa residents.





MERUSRI ANTELOPES

# FLOWING BENEATH YOUR FEET

Antelopes’ water management solution  
lies underground.

Three underground areas—below elevated parks, walkways and bridges—manage water in different ways, channeling the flow to dedicated underground storing areas.

Additionally, sponge zones percolate and store rainwater to prevent flooding and recharging earth.

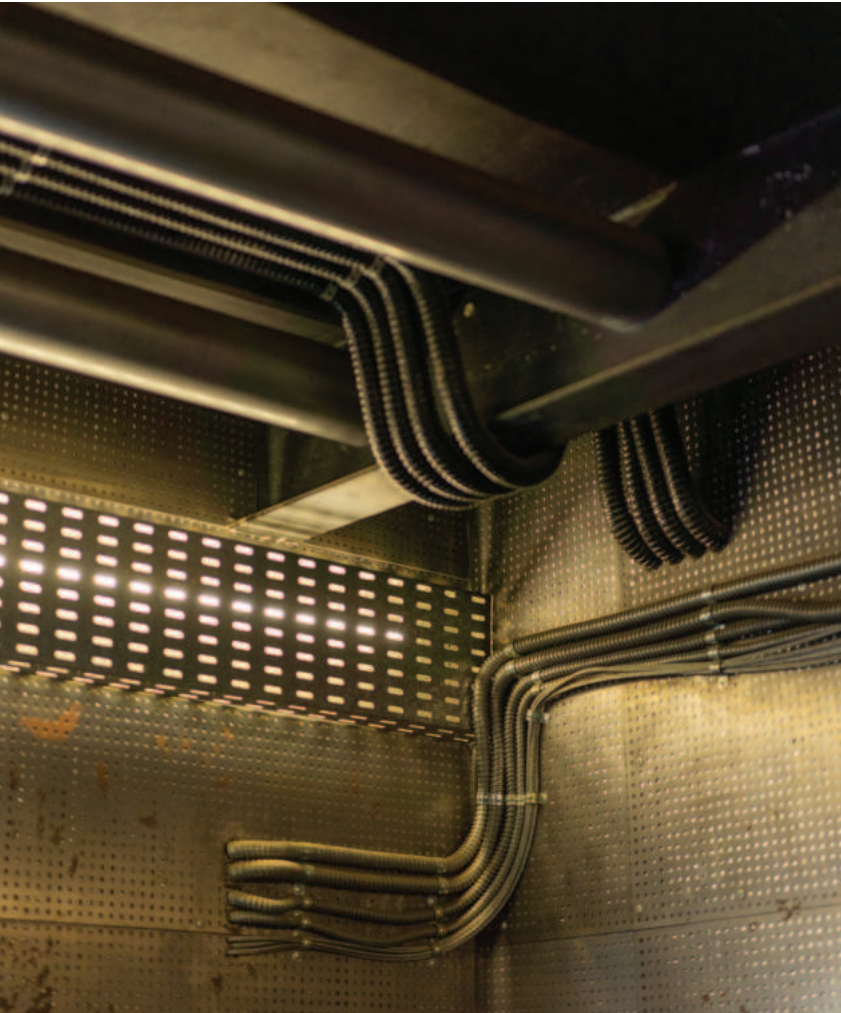
# Raising the standard by going underground

Our essential infrastructure is built into  
Antelopes’ topography, out of your line of sight.

Our tiered hillocks are elevated to increase green surfaces as well as create space for essential amenities, which is built above ground for most Bengaluru projects, taking up space and getting in the way.

Beneath your feet lie Antelopes’ lifelines, in concrete-lined trenches that have been developed for longevity, aesthetics, and ease—cost no bar.

- Electrical conduits
- Electricity cables and backups
- Ethernet conduits for internet and DTH
- Gas pipelines
- Fresh water and sanitary lines





# CONVENIENCE REDEFINED

Every villa is thoughtfully designed for comfort and convenience, in every definition of the terms.



## CONCIERGE SERVICES:

Enjoy the ease of having doorstep concierge services to make running daily errands smoother.

From delivering parcels to booking movie tickets, arranging for community services and more. Cross off grocery pick-up from your to-do list, hiring a cab, lifting heavy parcels –have our concierge help you out. We’re blending community and convenience together.



## HOME AUTOMATION

Your home is controlled by the click of a button. With digital connections to your AC, fans, lights and more, set up your home to respond to your schedule and lifestyle.

With lights coming on automatically when you come home from a long day’s work to voice controlled systems when your hands are full - make your home work for you



## ELEVATED ELEVATORS

Every villa is equipped with a durable and top quality lift of German-make lift to give you unfettered access to every corner of your home. We ensure top-notch maintenance completed quickly for uninterrupted service.

As the Antelopes community, we want you to enjoy the facilities and amenities than worrying about their maintenance, because we’re always on the job.



MERUSRI ANTELOPES

# AMENITIES THAT ENRICH LIFE

Antelopes’ many spaces and features empower you to develop and live a rich and complex life.

The amenities offered within the property extend your life from the indoors to outdoors.

Designed for dynamic use, various amenities adapt to community usage, offer easy access, and promote interconnectedness.

## CONNECT

- Elevated parks
- Shaded seating
- Community gathering spaces
- Tiered hillocks
- Green mounds

## RELAX

- Meditation zones
- Reflective pools
- View zones
- Elders park
- Yoga deck
- Modern Gym

## PLAY

- Skate park
- Sand pit
- Sports ground
- Jogging track
- Outdoor gyms
- Net climbing
- Mini basket ball
- Kids play area
- Squash court

## EXPERIENCE

- BBQ area
- Amphitheatre
- Butterfly garden
- Pet park
- Integrated park
- many more to keep you indulged...





MERUSRI ANTELOPES

Villa size starting from  
3428sqft\*

Call us. Talk to us. Schedule a visit.  
Be the first to see Antelopes when its journey begins.



# A MERUSRI PROJECT LIVING MADE BETTER

Since 2014, Merusri has been giving residents a unique real estate experience.

We stay one step ahead of what every customer, or partner needs, be it compliance, sustainability, design, transparency, or empathy.

THE FUTURE AT MERUSRI IS SMARTER,  
BETTER, GREENER.

TERMS AND CONDITIONS :

Details mentioned are tentative and images are representative, not to be considered actual.

DISCLAIMER :

\*This is a plotted development approval. Merusri Developers is executing the design and construction of the villas.

SUB DISCLAIMER :

Merusri Antelopes is the codename for marketing purposes; the actual name of the project as per RERA is Merusri Swamy Orchards.





# antelopes

by Merusri

Contact

+91 96320 76076 / +91 87929 68444

[www.merusridevelopers.com](http://www.merusridevelopers.com)

Address: 17/1, Ground Floor, MERUSRI DEVELOPERS, Ncc Urban - Windsor, Bellary Rd,  
opp. Jakkur Aerodrome, Yashoda Nagar, Yelahanka, Bengaluru, Karnataka 560064