



Manikchand – Svamitva presents

**SOUL SPRING**

Exquisite homes. Holistic living.









Where nature  
and life entwine



There's solace in the  
slow pace of soulful living









Where the wind  
carries your worries















*And blows away the  
chaos of everyday rush*



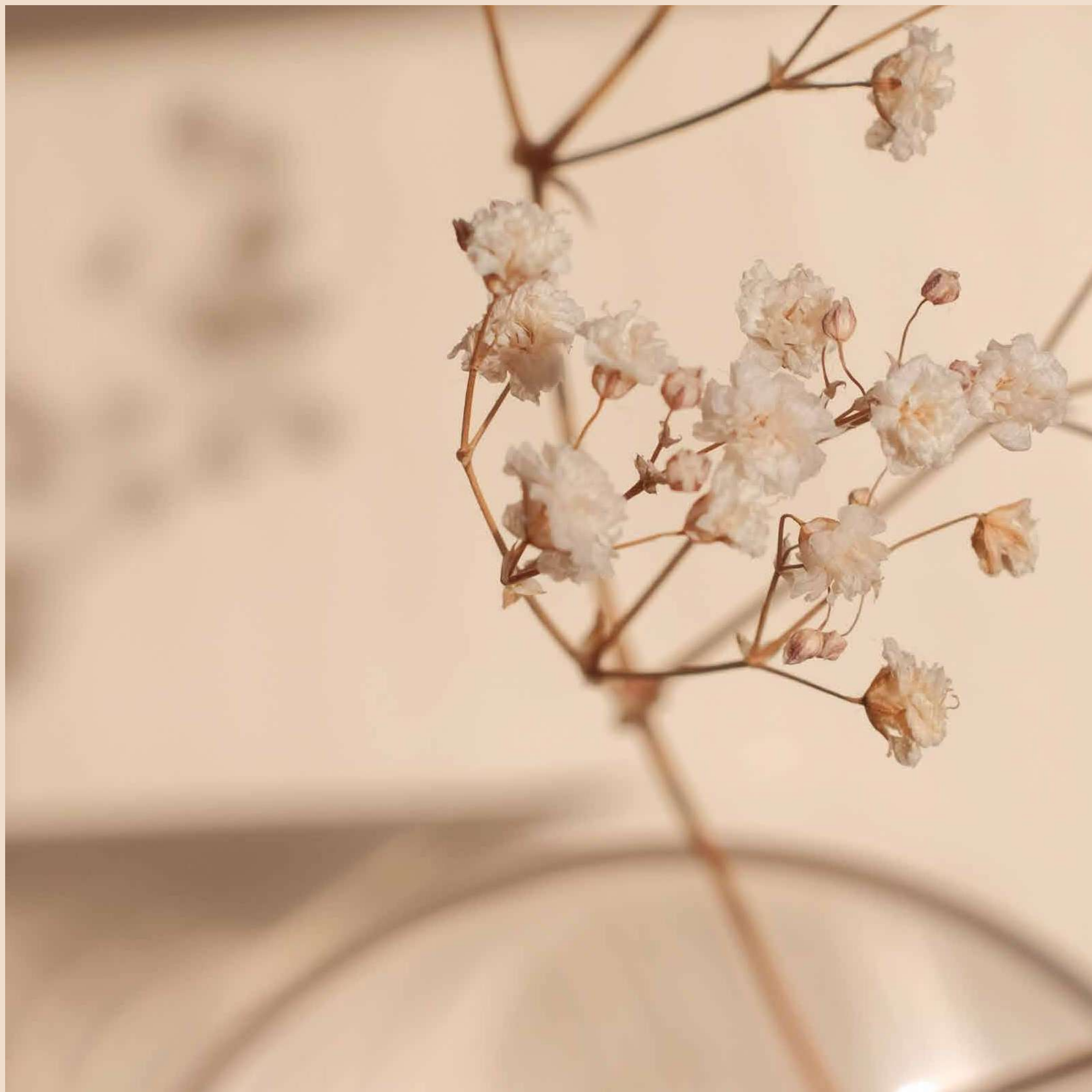
Indulge in the finer things  
that make life worth living















For true luxury is found  
in harmony with the  
environment



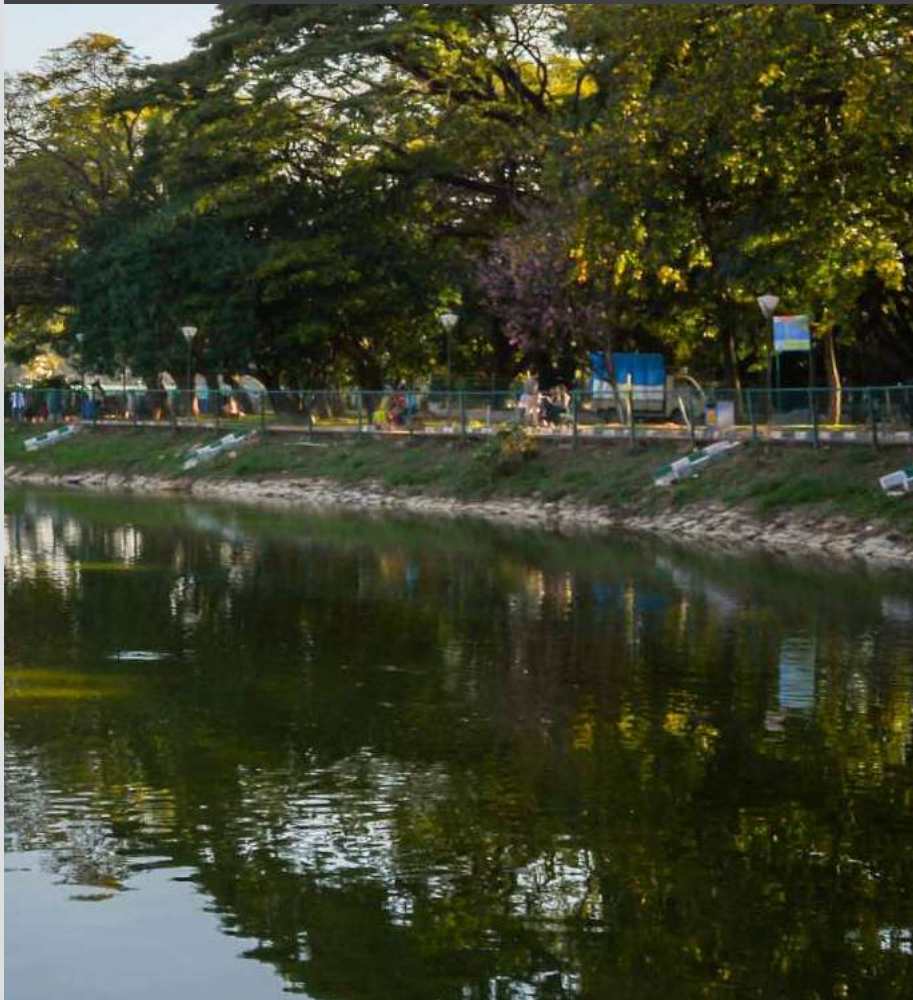






# HSR Layout:

## A place where innovation meets inspiration



Nestled in the heart of South Bangalore, HSR Layout is a place steeped in history and entrepreneurial spirit. The area was planned and developed by the Bangalore Development Authority (BDA) in the late 1980s, but it was in the early 2000s that HSR Layout began to emerge as a start-up hub, thanks to its convenient location, and access to talent from institutions such as IIMB and NIFT.

Over the years, HSR Layout has become a melting pot of ideas, a place where innovation thrives and creativity flourishes. And with success stories like Flipkart, Ola, and Swiggy, it has become a beacon of hope for entrepreneurs and dreamers, a place where anything is possible.

Come, be a part of this wondrous journey, and create your own history in the city of endless possibilities.



# Everything you need only 5 Minutes away



- Soulspring
- Healthcare
- Entertainment
- Education
- Business centers



Scan for direction





Escape the hustle and bustle of the city without leaving it and indulge in a perfect blend of modern living and natural beauty.

With easy access to popular locales and essential amenities, you'll love calling this urban paradise your home.





# SOUL SPRING

*Exquisite homes. Holistic living.*











# Discover the art of mindful indulgence

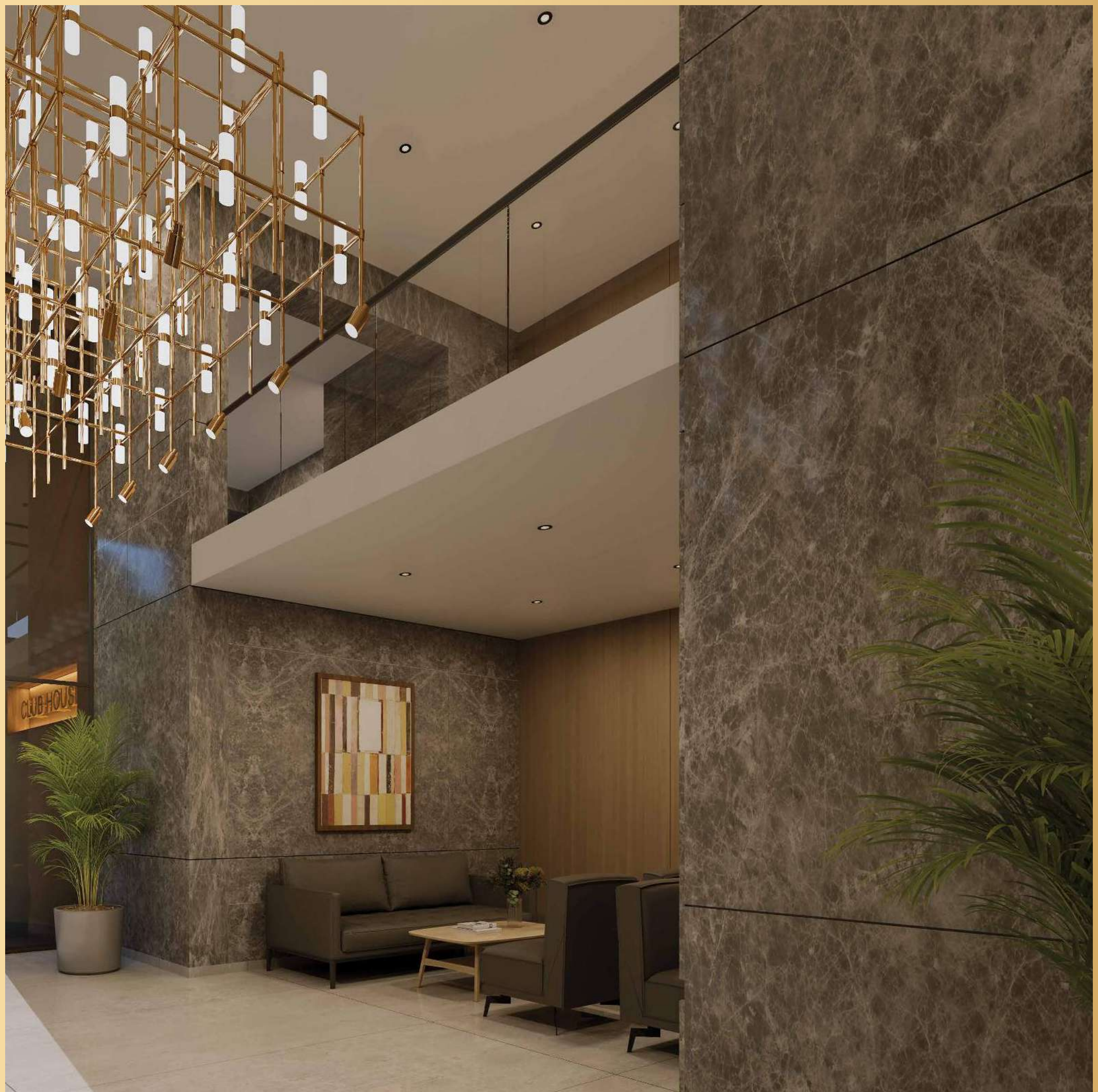
At Soulspring, it is not just about elevating your lifestyle, it is about mindfully incorporating the essence of nature into your daily life through wide-open living spaces and thoughtful amenities spread across 4.27 acres of land.

Get away from the city while being right in the center of it. The masterful architecture of up to 4 BHK apartments sing of a one-of-a-kind luxury lifestyle.

Get ready to admire every moment.











# Pristine through every angle

The interiors of these apartments are thoughtfully designed to provide a medley of elegance and comfort, with premium materials and bespoke finishes. The spacious apartments - from 2 BHK to 4 BHK - are designed to maximize efficiency, with minimal transition spaces. The seamless flow into the joint living and dining room creates more space and character.





The use of Aluminum formwork in construction yields a higher quality and requires less maintenance compared to traditional methods. The inclusion of spacious balconies will invite you to spend more time relaxing, whether reading in a cozy nook, savoring the view of the Agara Lake, or tending to a hydroponic vertical garden. Additionally, the sundeck offers a unique space to enjoy sunsets and the fresh air brushing against you.





Multi play court

# Opulent living intertwined with comfort

Experience wellness through a myriad of settings that blend nature with activities like no other. With a supreme combination of indulgences and aspirations, Soulspring is bound to exceed your expectations.





Board Games



Putt Golf



# Revitalize your soul with Soulspring's wellness focused living spaces

Soulspring is a pioneering real estate project that introduces the concept of wellness-induced living in South India.



Gong Park

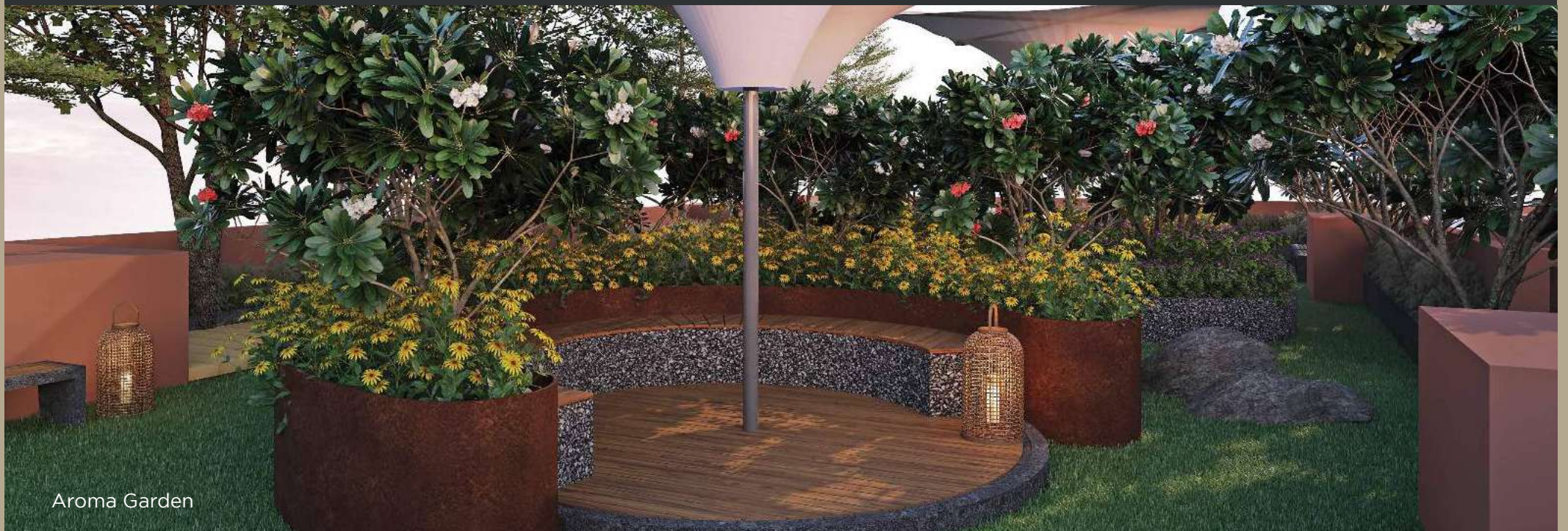




With a focus on physical, mental, and emotional wellness, the project offers a range of amenities such as a gym, a swimming pool, space for leisurely walks, and meditation areas, designed to promote a complete wellness experience. The apartments are crafted to maximize natural light and ventilation, ensuring a healthy and comfortable living space. Soulspring is a revolutionary concept, setting a new standard for luxury living that prioritizes a healthier, happier, and more fulfilling lifestyle



# A New Way To Unwind



Aroma Garden



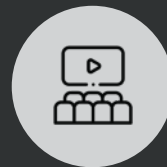
Aroma garden



Swing Park



Barbeque dinning



Amphitheatre



Yoga Deck



Soulspring offers an array of luxurious amenities designed to promote wellness and relaxation. From the reflexology park and Gong Park to the infinity pool, steam and sauna, and aroma garden with acupuncture walk, residents can indulge in a range of therapeutic experiences. Each amenity is thoughtfully designed to rejuvenate



and revitalize the senses, creating a truly indulgent living experience. The swing park awakens the child in you, while the barbeque dining area creates a convivial space to host friends and family. The amphitheater, a space for cultural confluence, comes alive with performances and events that stir the soul. The yoga deck offers a tranquil haven to nurture your inner peace, while the senior citizen deck provides a warm and secure space for our elders. Each of these amenities is thoughtfully designed to elevate the senses and infuse your life with a sense of joie de vivre. Soulspring is the perfect abode for those who yearn for a luxurious lifestyle that blends comfort, wellness, and community, in perfect harmony.



Infinity Pool



Reflexology Park



Gong Park



Steam and Sauna



Senior Citizen Deck



# Your New Retreat for Mindful Relaxation

1. Access Road
2. Entrance Gate
3. Security Cabin
4. Reception and Waiting
5. Driveway
6. DG Yard
7. Ramp
8. Pedestrian Path
9. Surface Car Park







- 10. Transformer Yard
- 11. Landscape Pockets
- 12. Multipurpose Court
- 13. Graphical Lawn with Mounds & Seating
- 14. Toddler Park & Landscape
- 15. Organic Waste Converter
- 16. Clubhouse (Amenities)

- 16A. Coworking Space
- 16B. Doctors on Call
- 16C. Lobby
- 16D. Home Theater
- 16E. Multipurpose Hall
- 16F. Squash Court
- 16G. Gym



# Tower 2

## 2, 3, 3.5, 4 BHK

SBU

---

<b>4BHK - APT 5A-6AC</b>	2622
<b>2BHK - APT 4B</b>	1576
<b>2BHK - APT 3A_B</b>	1353
<b>3BHK - APT 9C</b>	1729
<b>3BHK - APT 10C</b>	1744
<b>3.5BHK - APT 11C</b>	1805
<b>3BHK - APT 12C</b>	1705

---







## Tower 3

### 3, 3.5 BHK

SBU

---

<b>3BHK</b> - APT 13C	1772
<b>3BHK</b> - APT 14C	1745
<b>3BHK</b> - APT 9A_A	1825
<b>3BHK</b> - APT 10A	1887
<b>3.5BHK</b> - APT 11A_A	2018
<b>3BHK</b> - APT 12A_A	1859

---



# A co-creation of Manikchand and Svamitva

Soulspring is a joint venture between Manikchand and Svamitva, two well-established real estate developers in Bangalore. It aims to create one of South India's first properties to integrate wellness and luxury into every aspect of design and construction.

The Svamitva Group has over 42 years of experience in the industry and Manickchand is known for its premium real estate projects that use top-quality building technology to create iconic landmarks. Together, our projects are distinctive and created using eco-friendly materials, innovative architecture, wholesome features, and IGBC accredited procedures.







Come be a part of our family





# Manikchand<sup>®</sup>

**Site Address:**

ITI Layout, Sector 2, HSR Layout,  
Bengaluru, Karnataka 560068



## SVAMITVA<sup>™</sup>

**Svavitva Corporate Address:**

#110/2, 1st Floor, Krishnappa Layout,  
Lal Bagh Road, Bangalore 560027

**RERA registration number: (Phase 1)**

PRM/KA/RERA/1251/310/PR/220223/005735

**CREDAI**  
BANGALORE



visit website

**Disclaimer for RERA:**

This is not an offer or an invitation to offer and/or commitment of any nature. This contains artistic impression and stock images for illustration purposes and no warranty is impliedly given that the completed development will comply with any degree with such artists' impression as depicted. All specifications shall be as per the final agreement between the parties. Recipients are advised to use their discretion in relying on the information/amenities described/shown therein. T&C apply, E&OE.